

# Capacity Building Framework



## Communities of Opportunity (COO):

is a community-public-private partnership between King County and the Seattle Foundation that began in 2014 and expanded in 2016 with funding from the Best Starts for Kids tax levy. COO is a Best Starts for Kids investment strategy, fostering community conditions that create equitable opportunities for children, youth, and families.

**COO's mission:** to create greater racial, health, social, and economic equity in King County through investments in community-driven solutions and partnerships.

## COO Investment Strategies:

- Community Partnerships
- Systems and Policy Change
- Learning Community

## COO's Community Power-Building Approach:

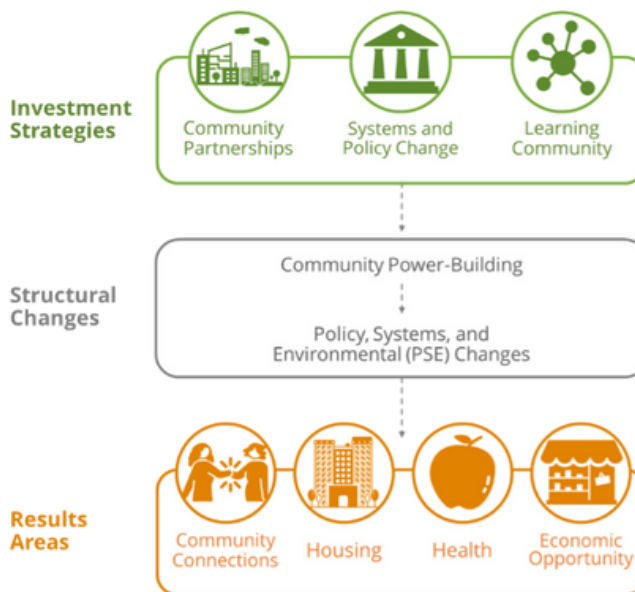
To create policy, system, and environmental (PSE) changes, COO supported efforts to build and expand the existing power in communities. COO partners (i.e., agencies participating in one or more COO investment strategy) held community events, educated and mobilized community members, and developed community leaders in efforts to strengthen community power.

## COO Learning Community:

Convenes and resources activities to build capacity, share learning, facilitate new connections and test transformative models to catalyze and accelerate our collective momentum toward equity.

## Learning Community Activities:

- Trainings & Workshops
- Coaching
- Cohorts
- Tools
- Mini grants





Capacity building and shared learning are central to the vision of the COO Learning Community. Programs are run by external consultants and attended by community members and organizers.



Through sharing experiences and lessons, COO aims to uplift local endeavors, bring communities and leaders of change together, and build upon successes for long-term change.



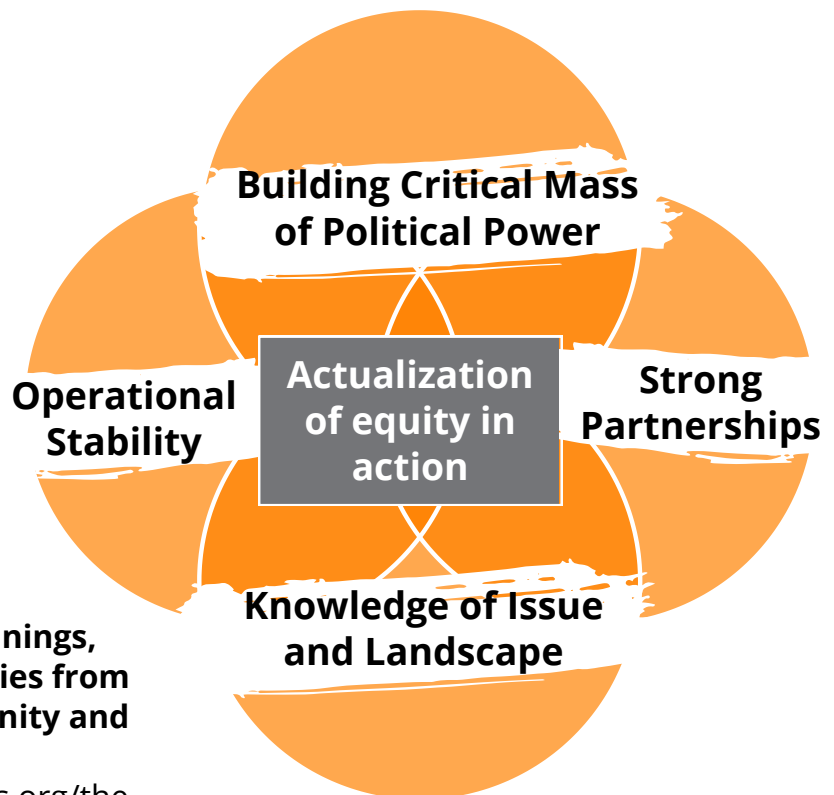
Many of these program consultants are King County community organizations or companies that do other community work in addition to their contributions to the Learning Community.

**Capacity building:** building an organization and partnership's infrastructure and sustained civic capacity to actualize equity – policy after policy, issue after issue, year after year.

**Capacity building approach:**

Our intention with COO Capacity Building is to design resources and activities that are uniquely aligned with COO's values and intentions, the priorities of our partners, are additive and complementary to what already exists, and not duplicative.

- Strength-based
- Relational
- Acknowledge inherent power dynamic
- Reciprocity
- Iterative
- Learning from partners and opportunities to lift up partners as leaders



Check out our tools, trainings, resources, and opportunities from the COO Learning Community and aligned partners

<https://www.coopartnerships.org/the-learning-community-resources>